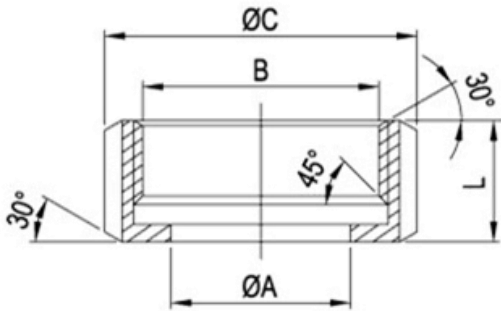


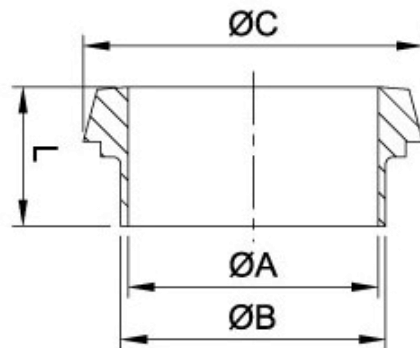
## DIN-13 Round Nut



DIN	ØA	B	ØC	D	L
10	19	RD 28x1/8	38	15	18
15	25	RD 34x1/8	44	15	18
20	31	RD 44x1/6	54	17	21
25	36	RD 52x1/6	63	18	21
32	42	RD 58x1/6	70	18	21
40	49	RD 65x1/6	78	18	21
50	62	RD 78x1/6	92	19	22
65	80	RD 95x1/6	112	21	25
80	94	RD 110x1/4	127	25	30
90	104	RD 120x1/4	138	26	30
100	115	RD 130x1/4	148	26	31
125	138	RD 160x1/4	178	30	35
150	164	RD 190x1/4	210	34	40

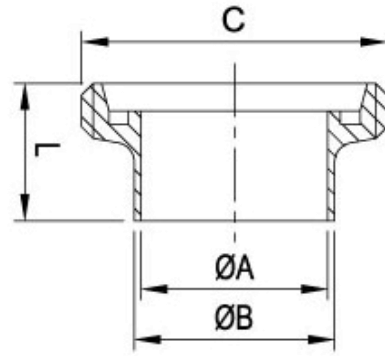
## DIN-14DA Welding Liner

DIN	ØA	ØB	ØC	L
10	10	13	22.5	17
15	16	19	28.5	17
20	20	23	36.5	18
25	26	29	44	22
32	32	35	50	25
40	38	41	56	26
50	50	53	68.5	28
65	57	61	76	30
80	66	70	86	32
90	81	85	100	37
100	100	104	121	44
125	125	129	150	34
150	150	154	176	37



## DIN-15DA Welding Male

DIN	ØA	ØB	L
10	10	RD 28x1/8	21
15	16	RD 34x1/8	21
20	20	RD 44x1/6	24
25	26	RD 52x1/6	29
32	32	RD 58x1/6	32
40	38	RD 65x1/6	33
50	50	RD 78x1/6	35
60	57	RD 85x1/6	36
65	66	RD 96x1/6	40
80	81	RD 110x1/4	45
90	89	RD 120x1/4	54
100	100	RD 130x1/4	54
125	125	RD 160x1/4	46
150	150	RD 190x1/4	50

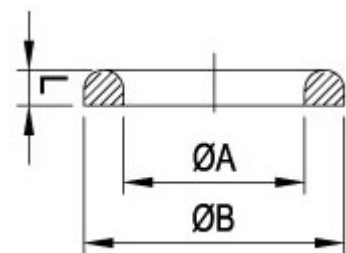
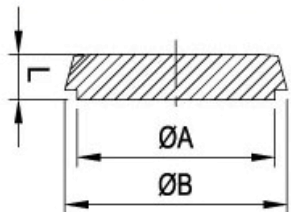


## DIN seal Ring ( EPDM, Silicone, Viton)

DIN	ØA	ØB	L
10	12	20	4.5
15	18	26	4.5
20	23	33	4.5
25	30	40	5
32	36	46	5
40	42	52	5
50	54	64	5
65	71	81	5
80	85	95	5
100	104	114	5
125	130	142	7
150	155	167	7

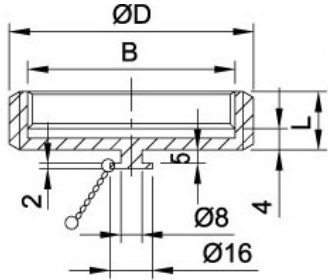
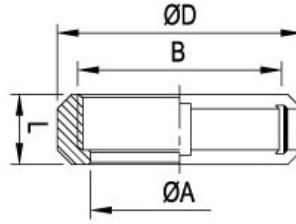
## DIN-14 Blanks

DIN	ØA	ØB	L
10	18	22	9
15	24	28	9
20	30	36	11
25	35	44	13
32	41	50	13
40	48	56	13
50	61	68	14
65	79	86	16
80	93	100	16
100	114	121	20
125	137	150	22
150	163	176	24



## SMS Nut 6 Slots SMS – 13R

size	øA	B	øD	L
1"	32	RD 40x1/6	51	19
1 1/4"	40	RD 48x1/6	60	22
1 1/2"	48	RD 60x1/6	74	23
2"	60.5	RD 70x1/6	84	24
2.5"	74	RD 85x1/6	100	28
3"	87	RD 98x1/6	114	30
4"	113	RD 125x1/4	138	31
4"	113	RD 125x1/4	138	31
4"	117	RD 132x1/6	150	31

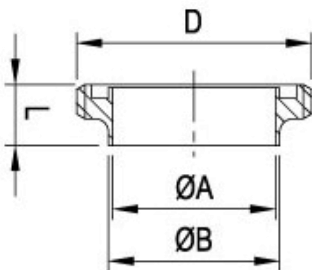
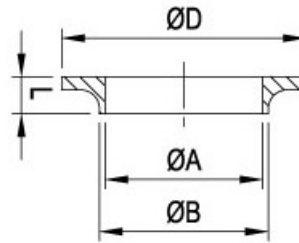


## SMS Blank Nut 13RBN

size	B	øD	L
1"	RD 40x1/6	51	19
1 1/4"	RD 48x1/6	60	22
1 1/2"	RD 60x1/6	74	23
2"	RD 70x1/6	84	24
2.5"	RD 85x1/6	100	28
3"	RD 98x1/6	114	30
4"	RD 125x1/4	138	31

## Welding Liner SMS-14S

size	øA	øB	øD	L
1"	22.5	25	35.5	11
1 1/2"	35.5	38	55	16
2"	48.5	51	65	17
2.5"	60.5	63.5	80	17
3"	72	76	93	19
4"	97.6	101.6	118	19
DN104	100	104	118	19
DN104-B	98.5	102.6	127	19

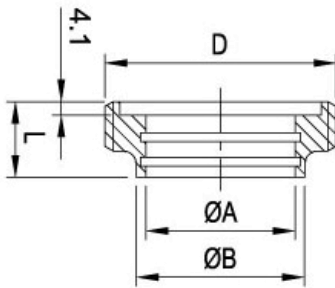
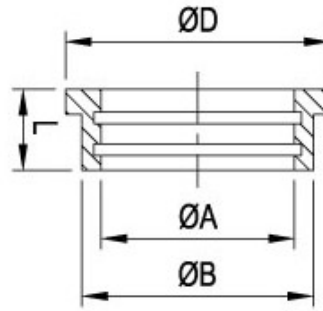


## Welding Male SMS - 15S

size	øA	øB	D	L
1"	22.5	25	RD 40x1/6	19
1 1/2"	35.5	38	RD 60x1/6	23
2"	48.5	51	RD 70x1/6	24
2.5"	60.5	63.5	RD 85x1/6	28
3"	72	76	RD 98x1/6	30
4"	97.6	101.6	RD 125x1/4	31
DN104	100	104	RD 125x1/4	31
DN104-B	98.5	102.5	RD 132x1/6	31

## SMS Expanding Liner 14R

size	øA	øB	øD	L
1"	22.5	32	35.5	17
1 1/4"	32.2	40	43.5	17
1 1/2"	38.2	48	55	20
DN40	40.2	48	55	20
2"	51.2	60	65	20
2.5"	63.7	73.5	80	25
3"	76.2	86	93	30
4"	101.8	112.5	118	27
DN104	104.2	112.5	118	27

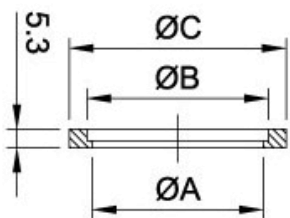
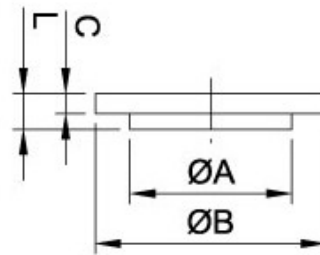


## SMS Expanding Male 15R

size	øA	øB	D	L
1"	25.2	32	RD 40x1/6	20
1 1/4"	32.2	40	RD 48x1/6	20
1 1/2"	38.2	47.9	RD 60x1/6	23
DN40	40.2	48	RD 60x1/6	23
2"	51.2	60.4	RD 70x1/6	25
2.5"	63.7	73.5	RD 85x1/6	30
3"	76.2	86.5	RD 98x1/6	35
4"	101.8	112.5	RD 125x1/4	30
DN104	104.2	112.5	RD 125x1/4	30

## SMS – 14B Blanks

size	øA	øB	C	L
1"	32	35.5	3.5	7.5
1 1/2"	48	55	5	9
2"	60	65	5	10
2.5"	73.5	80	5	10
3"	86	93	5	11
4"	112	118	6	11
DN104B	116	128	6	11

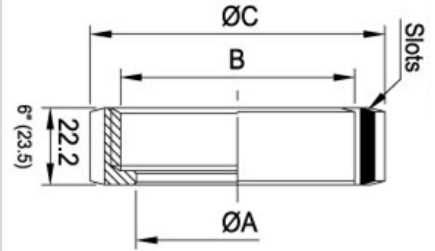


## Seal Ring LType (EPDM, PTFE, NITRILE, Viton)

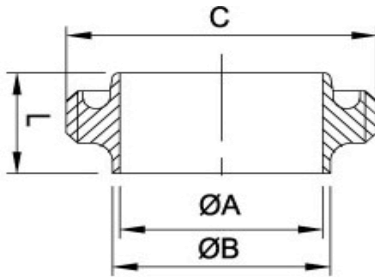
size	øA	øB	øC
1"	22.8	25.1	38.1
1 1/2"	35.8	38.1	47.8
2"	48.8	51.1	60.8
2.5"	61	63.6	73.3
3"	73.4	76.1	85.8
4"	100.5	104	115.7

## RJT – 13 NUT

size	øA	B	øC	L	L1	Slots
½"	14.5	19.6x10 TPI WHIT		16		
¾"	21	26.2X10 TPI WHIT		16		
1.0"	33.45	42.266X8 TPI WHIT	58.5	22.2	23.5	4
1.5"	46	54.966X8 TPI WHIT	74	22.2	23.5	4
2.0"	58.67	67.92X6 TPI WHIT	85.5	22.2	23.5	6
2.5"	71.4	80.62X6 TPI WHIT	98.5	22.2	23.5	6
3.0"	84.1	93.32X6 TPI WHIT	111.6	22.2	23.5	8
4.0"	109.7	118.72X6 TPI WHIT	138	22.2	23.5	8
6.0"	163	169.52X6 TPI WHIT	197	24		10



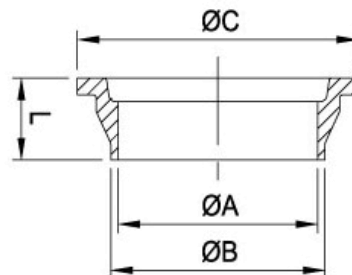
## RJT Welding Male RJT- 15



size	øA	øB	C	L
½"	9.6	13.7	21.2x10 T WHIT	16.5
¾"	16	20	27.6X10 T WHIT	16.5
1.0"	22.1	25.4	45.72X8 T WHIT	27
1.5"	34.8	38.1	58.42X8 T WHIT	27
2.0"	47.5	50.8	72.72X6 T WHIT	27
2.5"	60.2	63.5	85.42X6 TI WHIT	27
3.0"	72.9	76.2	98.12X6 T WHIT	27
4.0"	97.6	101.6	123.52X6 TI WHIT	27
104	100	104	123.52x6 T WHIT	27
6.0"	148	152.4	174.32X6 T WHIT	24

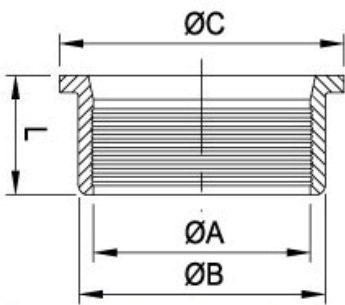
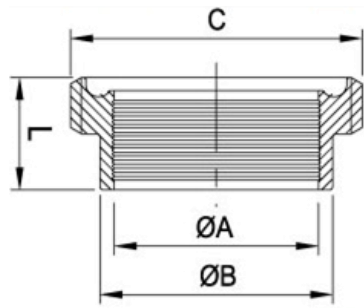
## RJT Welding Liner RJT- 14

size	øA	øB	øC	L
½"	9.6	14	18	11.4
¾"	16	20	23.1	11.4
1.0"	22.2	25.4	41.3	19.5
1.5"	34.8	38.1	54	19.5
2.0"	47.5	50.8	66.7	19.5
2.5"	60.2	63.5	79.4	19.5
3.0"	72.9	76.2	92.1	19.5
4.0"	97.6	101.6	117.5	19.5
6.0"	148	152.4	169.1	23.5



## RJT Expanding Male RJT – 15R

size	øA	øB	C	L
1.0"	25.5	32.5	45.72X8 T WHIT	20
1.5"	38.2	45.2	58.42X8 T WHIT	24
2.0"	50.9	57.9	72.72X6 T WHIT	28
2.5"	63.6	70.6	85.42X6 TI WHIT	32
3.0"	76.3	83.3	98.12X6 T WHIT	32
4.0"	101.7	108.7	123.52X6 TI WHIT	32

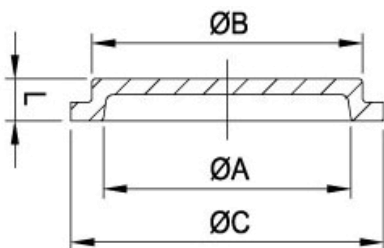
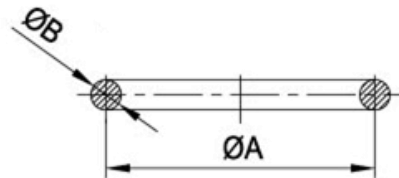


## RJT Expanding Liner RJT – 14R

size	øA	øB	øC	L
1.0"	25.5	32.5	41.3	20
1.5"	38.2	45.2	54	24
2.0"	50.9	57.9	66.7	28
2.5"	63.6	70.6	79.4	32
3.0"	76.3	83.3	92.01	32
4.0"	101.7	108.7	117.5	32

## RJT Seal Ring (EPDM, PTFE, Nitrile, Viton)

size	øA	øB	C
1.0"	33.3	6.6	3.2
1.5"	46	6.6	3.2
2.0"	58.7	6.6	3.2
2.5"	71.4	6.6	3.2
3.0"	84.1	6.6	3.2
4.0"	109.5	6.6	3.2
6.0"	162.6	6.6	3.2



size	øA	øB	øC	L
1.0"	37.8	32.5	41.3	9
1.5"	40.5	45.2	54	9
2.0"	53.2	57.9	66.7	9
2.5"	65.9	70.6	79.4	9
3.0"	78.2	83.3	92.1	9
4.0"	104	108.7	117.1	9
104	104	108.7	117.5	9